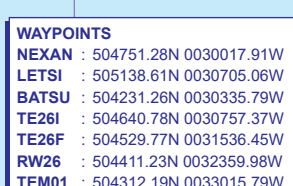


**RWT 20**  
(ACFT CAT A,B,C,D)

MIN TEMP <b>-15°C</b>
TRANSITION ALTITUDE <b>3000</b>



NM to RW26	5	4	3	2(SDF)	1
AI T(HGT)	2020(1918)	1650(1548)	1280(1178)	900(798)	530(428)

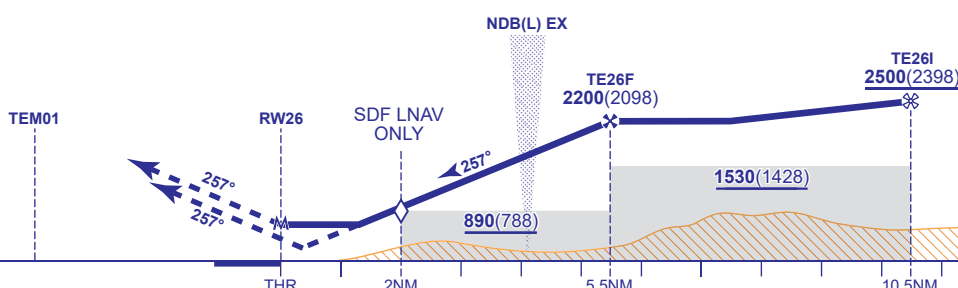
Year (1991)	2020 (1910)	1990 (1910)	1200 (1110)	900 (100)	900 (120)
TCU 50					

ICH 58 NDB(L) EX

MAPt

MAR\* (I NAV): BW26

Climb to **2500**. Initially towards **TEM01**. At **TEM01** revert to conventional navigation and turn right to **NDB(L) EX** and continue climb to **2500** or as directed.



Aircraft Category		A	B	C	D	Rate of descent	G/S KT	160	140	120	100	80
OCA (OCH)	LNAV/VNAV	570(468)	570(468)	570(468)	570(468)		FT/MIN	990	870	740	620	500
	LNAV	630(528)	630(528)	630(528)	630(528)							
VM(C)OCA (OCH,AAL)	Total Area	700(598)	880(778)	1090(988)	1090(988)							

**NOTE 1** Clearance for Initial Approach via BATSII subject to Danger Area activity

**CHANGE (12/21): EGNOS AND LPV REMOVED**